

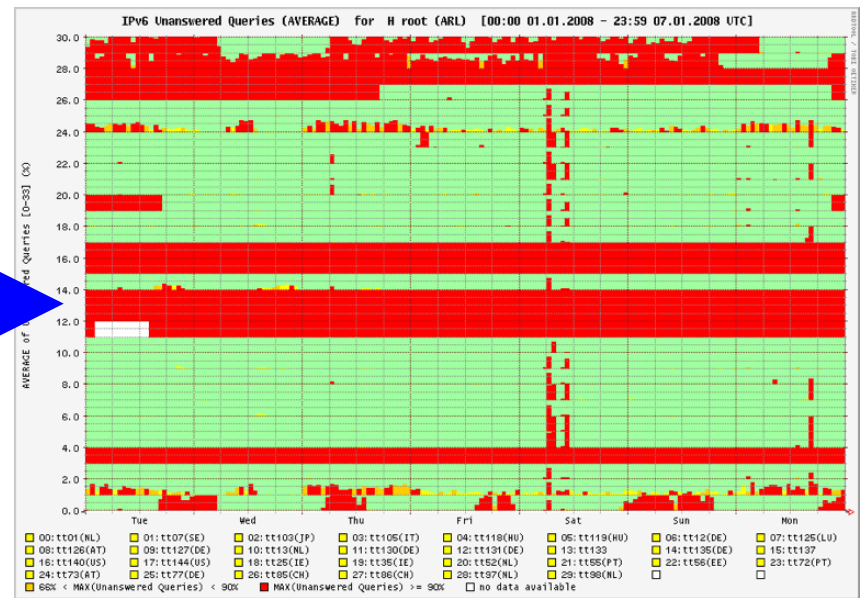
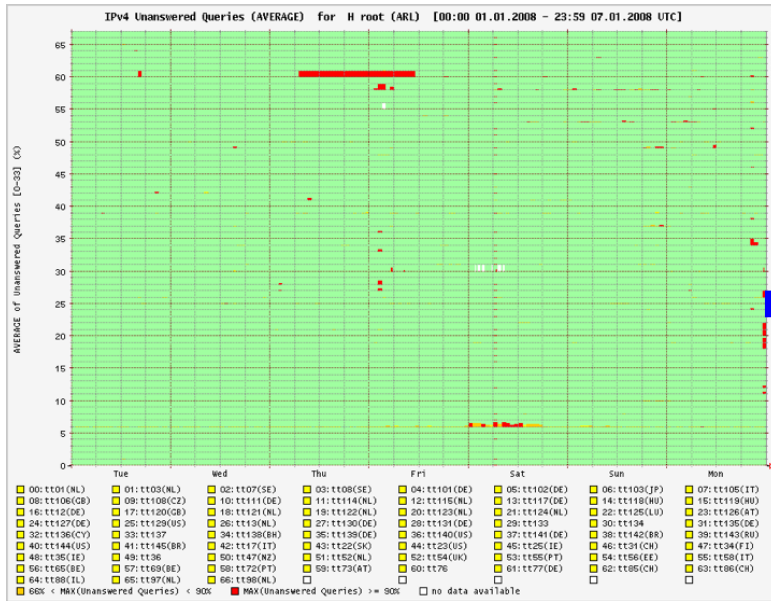


DNSSMON and MyASN

Monitoring services

DNSMON: Already done

- IPv6 support



- Private subscriber server (Faster data processing)
 - <http://dnsmon-customer.ripe.net>



DNSSMON: Planned new features (1)

- Anycast instance reporting
 - Graphs per instance
 - See which instance each probe sees
- SOA lag reporting
 - Highlight propagation delays
- Alerts/alarms
 - Configure notifications at certain thresholds



DNSMON: Planned new features (2)

- Traceroutes
 - See paths from probes to servers (and where they're broken)
- Better subscriber configurability
 - Ignore invalid responses
 - Filter replies not from the queried IP
 - Add query ID to raw data
 - Cross-reference with your own logs



DNSMON: Back-end improvements

- Better scalability
 - Allow us to monitor more TLDs
- rrdtool upgrades
 - Better IO, presentation
- Faster data gathering
 - More real-time statistics
- API
 - Embed plots in your own pages, monitoring systems

DNSMON: Plans with k.root-servers.net

- Deploy DNSMON probe at each K location
 - Measurements without network distortion
 - Ensure that every anycast instance is monitored
 - More probe sites to monitor your servers
 - Do you want to deploy at your sites?



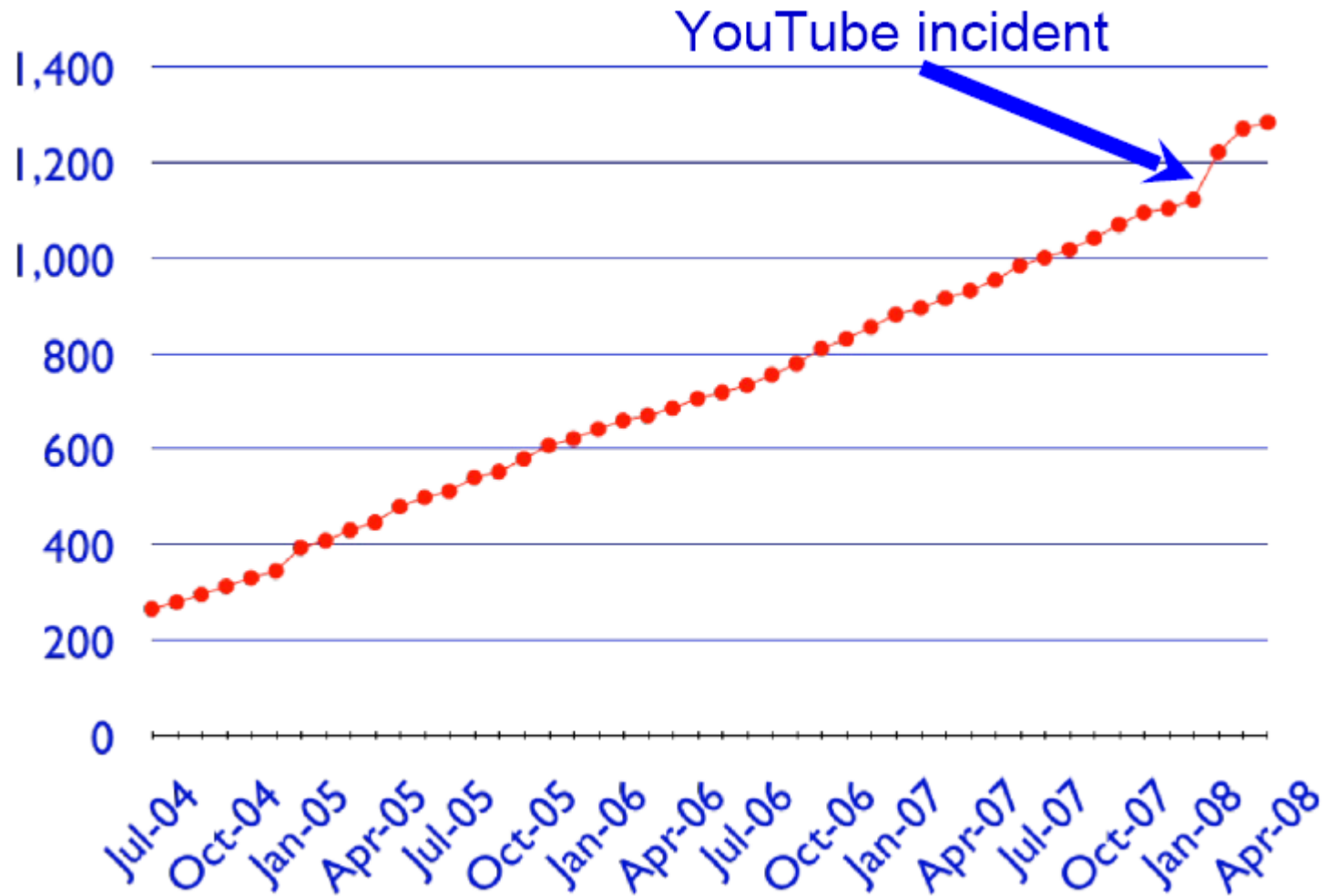


MyASN: Introduction

- Data gathered by RIS (Routing Information Service)
 - 15 collectors running Quagga BGPd
 - 620 peers (Peer AS12654)
 - <http://www.ripe.net/ris/>
- Generates alarms for wrong prefix announcements, full-feed leaks, etc. based on user defined filters (currently ~2500)
- Syslog or mail alarms



MyASN: Statistics





MyASN: Future

- Will become “IS Alarms”
 - Incorporates data from all services (DNSMON, TTM, RIS)
 - Flexible filters for events (Regular Expressions)
 - IPv6 support
 - Faster alarm condition recognition
 - Possibility for new alarms via Jabber, SMS, [you name it]
- Beta online for existing MyASN accounts
 - <http://ripe.net/is/alarms/>



Feedback

- What features would help you?
- Do you want to host a TTM box?
- Do you know an IX that should be covered by the RIS project?
- k.root-servers.net is in the planning phase of new instance deployments. Input on desirable locations is welcome.

Questions?

